

File Name: ctx28 manual.pdf

Size: 1504 KB

Type: PDF, ePub, eBook

Category: Book

Uploaded: 10 May 2019, 12:41 PM

Rating: 4.6/5 from 616 votes.

Status: AVAILABLE

Last checked: 8 Minutes ago!

In order to read or download ctx28 manual ebook, you need to create a FREE account.

[**Download Now!**](#)

eBook includes PDF, ePub and Kindle version

[Register a free 1 month Trial Account.](#)

[Download as many books as you like \(Personal use\)](#)

[Cancel the membership at any time if not satisfied.](#)

[Join Over 80000 Happy Readers](#)

Book Descriptions:

We have made it easy for you to find a PDF Ebooks without any digging. And by having access to our ebooks online or by storing it on your computer, you have convenient answers with ctx28 manual . To get started finding ctx28 manual , you are right to find our website which has a comprehensive collection of manuals listed.

Our library is the biggest of these that have literally hundreds of thousands of different products represented.

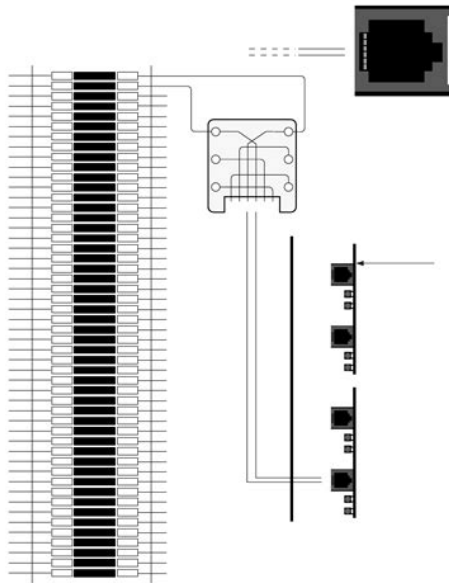


Book Descriptions:

ctx28 manual

Page 3 TAIS DSD License Agreement TOSHIBA AMERICA INFORMATION SYSTEMS, INC.
"TAIS" Toshiba America Information Systems, Inc., "TAIS" warrants that this. Page 5 Contents
Contents. IntroductionPage 7 ContentsPage 8 ContentsPage 18 IntroductionPage 19 IntroductionIt
includes information on site. Page 22 CTX28 InstallationPage 25 CTX28 InstallationPage 26 CTX28
InstallationPage 28 CTX28 InstallationPage 29 CTX28 InstallationPage 31 CTX28 InstallationPage 32
CTX28 InstallationPage 33 CTX28 InstallationPage 35 CTX28 InstallationPage 37 CTX28
InstallationPage 38 CTX28 InstallationPage 40 CTX28 InstallationDigital. Page 42 CTX28
InstallationCTX28 Secondary ProtectionPage 44 CTX28 InstallationGVMU Administration PC
ConnectionsPage 46 CTX28 InstallationPage 50 Strata CTX ConfigurationPage 51 Strata CTX
ConfigurationStrata CTX670 OverviewPage 54 Strata CTX ConfigurationPage 55 Strata CTX
ConfigurationCTX670 Remote Expansion CabinetPage 56 Strata CTX ConfigurationPage 58 Strata
CTX ConfigurationPage 59 Strata CTX ConfigurationPage 61 Strata CTX ConfigurationPage 64
Strata CTX ConfigurationPage 65 Strata CTX ConfigurationPage 67 Strata CTX ConfigurationPage
68 Strata CTX ConfigurationPage 69 Strata CTX ConfigurationWorksheet 1 Toshiba DKT and IP
TelephonesWorksheet 3 CO Line.<http://www.dambi.pl/userfiles/how-to-calculate-pmt-manually.xml>

- **ctx28 manual, toshiba ctx28 manual.**



Page 72 Strata CTX ConfigurationPage 73 Strata CTX ConfigurationPage 74 Strata CTX ConfigurationPage 75 Strata CTX ConfigurationPage 77 Strata CTX ConfigurationPage 78 Strata CTX ConfigurationPage 80 Strata CTX ConfigurationPage 82 Strata CTX ConfigurationPage 83 Strata CTX ConfigurationWorksheet 6 Strata CTX670 Cabinet SlotsPage 84 Strata CTX ConfigurationPage 85 Strata CTX ConfigurationPage 86 Strata CTX ConfigurationPage 87 Strata CTX ConfigurationPage 90 Strata CTX ConfigurationPage 91 Strata CTX ConfigurationCabinet Power Factor CheckPage 92 Strata CTX ConfigurationPage 94 Strata CTX ConfigurationPage 96 Strata CTX ConfigurationPage 97 Strata CTX ConfigurationPage 100 Strata CTX ConfigurationPage 101 Strata CTX ConfigurationHardware CompatibilityPage 102 Strata CTX ConfigurationPage 127 Chapter 4 Strata CTX670 Installation Strata CTX670 Installation 4It includes information on sitePage 129 Strata CTX670 InstallationPage 131 Strata CTX670 InstallationFCC Registration InformationPage 133 Strata CTX670 InstallationPage 134 Strata CTX670 InstallationPage 135 Strata CTX670 InstallationPage 137 Strata CTX670 InstallationPage 138 Strata CTX670 InstallationPage 139 Strata CTX670 InstallationPage 143 Strata CTX670 InstallationThe purpose of the <http://momsystem.ru/public/how-to-calculate-qtc-interval-manually.xml>

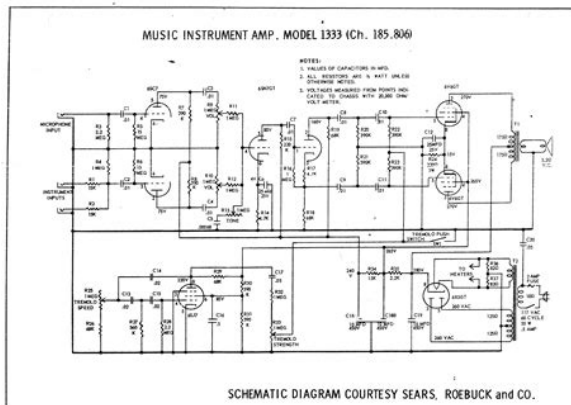


**CTX28, CTX100-S, CTX100 and CTX670
Installation and Maintenance
Manual**

Page 144 Strata CTX670 InstallationPage 145 Strata CTX670 InstallationPage 146 Strata CTX670
InstallationPage 147 Strata CTX670 InstallationPage 148 Strata CTX670 InstallationPage 149 Strata
CTX670 InstallationPage 150 Strata CTX670 InstallationPage 151 Strata CTX670 InstallationPage
153 Strata CTX670 InstallationPage 155 Strata CTX670 InstallationStep 6 Install Reserve
PowerPage 156 Strata CTX670 InstallationPage 157 Strata CTX670 InstallationPage 158 Strata
CTX670 InstallationPage 160 Strata CTX670 InstallationPage 161 Strata CTX670 InstallationPage
164 Strata CTX670 InstallationPage 165 Strata CTX670 InstallationPage 166 Strata CTX670
InstallationPage 167 Strata CTX670 InstallationPage 169 Strata CTX670 InstallationStep 7 Install
Processor and Universal PCBsPage 170 Strata CTX670 InstallationRefer to the Strata CTX
Programming.

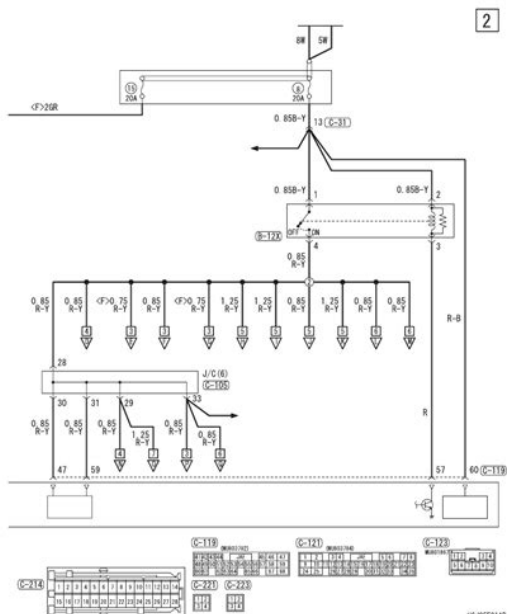
Strata CTX670 InstallationPage 184 Strata CTX670 InstallationPage 185 Strata CTX670
InstallationPage 187 Strata CTX670 InstallationPage 190 Rack Mount CabinetsPage 192 Rack
Mount CabinetsPage 193 Rack Mount CabinetsStep 1 Prior to Cabinet InstallationPage 194 Rack
Mount CabinetsPage 196 Rack Mount CabinetsPage 197 Rack Mount CabinetsPage 198 Rack Mount
CabinetsPage 199 Rack Mount CabinetsStep 6 Connect Data and Ground CablesStep 10 Install
Power Strip BRPSB120APage 203 Rack Mount CabinetsPage 204 Rack Mount CabinetsPage 207
Rack Mount CabinetsPage 208 Rack Mount CabinetsPage 209 Rack Mount CabinetsPage 210 Rack
Mount CabinetsPage 212 Rack Mount CabinetsPage 213 Rack Mount CabinetsPage 214 Rack Mount
CabinetsPage 215 Rack Mount CabinetsCabinet AC Power ConsiderationsPage 216 Rack Mount
CabinetsPage 217 Rack Mount CabinetsPage 218 Rack Mount CabinetsPage 219 Rack Mount
CabinetsPage 220 Rack Mount CabinetsPage 221 Rack Mount CabinetsAC CablingPage 222 Rack
Mount CabinetsRemote Expansion Cabinet UnitPage 224 Rack Mount CabinetsPage 225 Chapter 6
PCB Installation PCB Installation 6Page 227 PCB InstallationPage 228 PCB InstallationPage 230 PCB
InstallationPage 232 PCB InstallationPage 236 PCB InstallationPage 242 PCB InstallationPage 244
PCB InstallationPage 245 PCB InstallationPage 248 PCB InstallationPage 250 PCB InstallationPage
252 PCB InstallationPage 255 PCB InstallationPage 257 PCB InstallationPage 260 PCB
InstallationPage 263 PCB InstallationPage 266 PCB InstallationPage 267 Chapter 7 ISDN Interfaces
ISDN Interfaces 7Page 269 ISDN InterfacesPage 270 ISDN InterfacesPage 271 ISDN InterfacesPage
273 ISDN InterfacesPage 274 ISDN InterfacesPage 275 ISDN InterfacesBPTU and RPTU

CablingPage 278 ISDN InterfacesPage 279 ISDN InterfacesPage 280 ISDN InterfacesPage 282 ISDN InterfacesPage 283 ISDN InterfacesPage 285 ISDN InterfacesPage 286 ISDN InterfacesPage 289 ISDN InterfacesPage 290 ISDN InterfacesPage 291 ISDN InterfacesPage 293 ISDN InterfacesPage 297 ISDN Interfaces.



Page 298 ISDN InterfacesPage 299 ISDN InterfacesISDN Testing and TroubleshootingPage 300 ISDN InterfacesPage 301 ISDN InterfacesPage 302 ISDN InterfacesPage 303 ISDN InterfacesPage 304 ISDN InterfacesPage 307 ISDN InterfacesPage 308 ISDN InterfacesPage 310 T1Page 311 T1Page 313 T1Page 317 T1Page 319 T1Page 320 T1Table 89 DT DHin Data Code continuedPage 324 T1Page 325 T1CSU InstallationPage 328 T1Page 329 T1Page 332 IP Telephony and QSIG Over IPPage 333 IP Telephony and QSIG Over IPStep 1 Perform a LAN Voice Readiness.

<http://www.metinadistribuzione.com/images/construction-manual-for-highway-construction.pdf>



UQ1A Buttons, LEDs and JumpersPage 338 IP Telephony and QSIG Over IPPage 339 IP Telephony and QSIG Over IPPage 340 IP Telephony and QSIG Over IPPage 341 IP Telephony and QSIG Over IPPage 342 IP Telephony and QSIG Over IPPage 343 IP Telephony and QSIG Over IPStep 4 Connect IPTs to NetworkPage 344 IP Telephony and QSIG Over IPPage 345 IP Telephony and QSIG Over IPPage 346 IP Telephony and QSIG Over IPPage 347 IP Telephony and QSIG Over IPPage 348 IP Telephony and QSIG Over IPPage 349 IP Telephony and QSIG Over IPPage 350 IP Telephony and QSIG Over IPPage 351 IP Telephony and QSIG Over IPPage 352 IP Telephony and QSIG Over IPPage 353 IP Telephony and QSIG Over IPPage 354 IP Telephony and QSIG Over IPPage 355 IP Telephony and QSIG Over IPPage 357 IP Telephony and QSIG Over IPPage 358 IP Telephony and QSIG Over IPPage 359 IP Telephony and QSIG Over IPCTX IP TroubleshootingPage 360 IP Telephony and QSIG Over IPPage 361 IP Telephony and QSIG Over IPPage 362 IP Telephony and QSIG Over IPPage 366 IP Telephony and QSIG Over IPPage 371 IP Telephony and QSIG Over IPPage 372 IP Telephony and QSIG Over IPPage 373 Chapter 10 MDF PCB Wiring MDF PCB Wiring 10Page 374 MDF PCB WiringPage 375 MDF PCB WiringPage 376 MDF PCB WiringPage 378 MDF PCB WiringPage 383 MDF PCB WiringPage 384 MDF PCB WiringPage 385 MDF PCB WiringPage 386 MDF PCB WiringPage 387 MDF PCB WiringPage 388 MDF PCB WiringNetwork BridgingPage 391 MDF PCB WiringPage 399 Chapter 11 Station Apparatus Station Apparatus 11Page 401 Station ApparatusPage 402 Station ApparatusPage 403 Station ApparatusPage 404 Station ApparatusPage 406 Station ApparatusPage 408 Station ApparatusPage 411 Station ApparatusPage 413 Station ApparatusTelephone SettingsPage 416 Station ApparatusPage 417 Station ApparatusPage 418 Station ApparatusPage 419 Station ApparatusDigital Addon Module InstallationPage 420 Station ApparatusTilt StandsPage 422 Station ApparatusPage 423 Station ApparatusPage 424 Station ApparatusPage 425 Station ApparatusTelephone.

<https://otthonok.com/images/construction-manual-for-building-structures-pdf.pdf>



Page 426 Station ApparatusPage 427 Station Apparatus. ConnectionPage 428 Station ApparatusPage 429 Station ApparatusCordless Telephone InstallationPage 430 Station

ApparatusPage 432 Station ApparatusPage 433 Station ApparatusPage 434 Station ApparatusPage 435 Station ApparatusPage 436 Station ApparatusPage 438 Station ApparatusWith the headset. Page 439 Station ApparatusCordless Telephone Troubleshooting and. SpecificationsPage 441 Station ApparatusPage 442 Station ApparatusSpecificationsTable 2 SpecificationsPage 445 Station ApparatusPage 446 Station ApparatusPage 448 Station ApparatusPage 449 Station ApparatusPage 450 Station ApparatusPage 451 Station ApparatusPage 452 Station ApparatusThis is idealPage 454 Station ApparatusPage 455 Station ApparatusPage 456 Station ApparatusPage 461 Peripheral InstallationPage 465 Peripheral InstallationPage 467 Peripheral InstallationPage 468 Peripheral InstallationPage 470 Peripheral InstallationPage 471 Peripheral InstallationPage 472 Peripheral InstallationExternal Speaker Unit HESB OptionsPage 474 Peripheral InstallationPage 475 Peripheral InstallationPage 480 Peripheral InstallationPower Failure OptionsPage 482 Peripheral InstallationPage 483 Peripheral InstallationStation Message Detail Recording SMDRPage 484 Peripheral InstallationA base cabinetPage 493 Index. P networking. Page Count 40 Further, T oshiba America Information Systems, Inc., Digital Solutions Division, also reserves the right, without prior notice, to make such changes in equipment design or components as engineering or manufacturing methods may warrant. Digital Solutions Division All rights reserved. No part of this manual, covered by the copyrights hereon, may be reproduced in any form or by any means—graphic, electronic, or mechanical, including recording, taping, photocopying, or information retrieval systems—without express written permission of the publisher of this material.

Refer to page 4 for additional copyright notices. Strata CTX28 General End User Information The Strata CTX28 Digital Business Telephone System is registered in accordance with the provisions of Part 68 of the Federal Communications Commission's Rules and Regulations. FCC Requirements Means of Connection The Federal Communications Commission FCC has established rules which permit the Strata CTX28 system to be connected directly to the telephone network. Connection points are provided by the telephone company—connections for this type of customer-provided equipment will not be provided on coin lines. Connections to party lines are subject to state tariffs. Incidence of Harm If the system is malfunctioning, it may also be disrupting the telephone network. The system should be disconnected until the problem can be determined and repaired. If this is not done, the telephone company may temporarily disconnect service. If possible, they will notify you in advance, but, if advance notice is not practical, you will be notified as soon as possible. You will be informed of your right to file a complaint with the FCC. Service or Repair For service or repair, contact your local T oshiba telecommunications distributor. Telephone Network Compatibility The telephone company may make changes in its facilities, equipment, operations, and procedures. If such changes affect the compatibility or use of the Strata CTX100 or CTX670 system, the telephone company will notify you in advance to give you an opportunity to maintain uninterrupted service. It has been tested and found to comply with the limits for a Class A computing device pursuant to Subpart J of Part 15 of FCC Rules, which are designed to provide reasonable protection against such interference when operated in a commercial environment. This system is listed with Underwriters Laboratory.

<https://www.avenueroadadvertising.com/wp-content/plugins/formcraft/file-upload/server/content/file/16288872140766--Canadian-freight-claims-manual.pdf>

UL Requirement If wiring from any telephone exits the building or is subject to lightning or other electrical surges, the secondary protection is required. Secondary protection is also required on DID, OPS, and Tie lines. Additional information is provided in this manual. Important Notice—MusicOnHold In accordance with U.S. Copyright Law, a license may be required from the American Society of Composers, Authors and Publishers, or other similar organization, if radio or TV broadcasts are transmitted through the music on hold feature of this telecommunication system. T oshiba America Information Systems, Inc., strongly recommends not using radio or tele

vision broadcasts and hereby disclaims any liability arising out of the failure to obtain such a license. CP01, Issue 8, Part I Section 14.1 Notice The Industry Canada label identifies certified equipment. This certification means that the equipment meets certain telecommunications network protective, operational and safety requirements as prescribed in the appropriate Terminal Equipment Technical Requirements documents. The Department does not guarantee the equipment will operate to the user's satisfaction. Before installing this equipment, users should ensure that it is permissible to be connected to the facilities of the local telecommunications company. The equipment must also be installed using an acceptable method of connection. The customer should be aware that compliance with the above conditions may not prevent degradation of service in some situations. Repairs to certified equipment should be coordinated by a representative designated by the supplier. Any repairs or alterations made by the user to this equipment, or equipment malfunctions, may give the telecommunications company cause to request the user to disconnect the equipment.

Users should ensure for their own protection that the electrical ground connections of the power utility, telephone lines and internal metallic water pipe system, if present, are connected together. This precaution may be particularly important in rural areas. CAUTION! Users should not attempt to make such connections themselves, but should contact the appropriate electric inspection authority, or electrician, as appropriate. T AIS grants to you a personal, nontransferable and nonexclusive right to use the copy of the Software provided under this License Agreement. You agree you will not copy the Software except as necessary to use it on one T AIS system at a time at one location. Modifying, translating, renting, copying, distributing, printing, sublicensing, transferring or assigning all or part of the Software, or any rights granted hereunder, to any other persons and removing any proprietary notices, labels or marks from the Software is strictly prohibited except as permitted by applicable law; you agree violation of such restrictions will cause irreparable harm to T AIS and provide grounds for injunctive relief, without notice, against you or any other person in possession of the Software. You and any other person whose possession of the software violates this License Agreement shall promptly surrender possession of the Software to T AIS, upon demand. Furthermore, you hereby agree not to create derivative works based on the Software. T AIS reserves the right to terminate this license and to immediately repossess the software in the event that you or any other person violates this License Agreement. Execution of the Software for any additional capabilities require a valid runtime license. 2. Intellectual Property. You acknowledge that no title to the intellectual property in the Software is transferred to you. You will not remove or change any proprietary notices contained in or on the Software.

Any transfer, use, or copying of the software in violation of the License Agreement constitutes copyright infringement. You are hereby on notice that any transfer, use, or copying of the Software in violation of this License Agreement constitutes a willful infringement of copyright. 3. No Reverse Engineering. You agree that you will not attempt, and if you employ employees or engage contractors, you will use your best efforts to prevent your employees and contractors from attempting to reverse compile, reverse engineer, modify, translate or disassemble the Software in whole or in part. Any failure to comply with the above or any other terms and conditions contained herein will result in the automatic termination of this license and the reversion of the rights granted hereunder back to T AIS. 4. Limited Warranty. THE SOFTWARE IS PROVIDED "AS IS" WITHOUT WARRANTY OF ANY KIND. The Software is provided with Restricted Rights. The Software and other materials provided hereunder constitute Commercial Computer Software and Software Documentation and Technical Data related to Commercial Items. Consistent with F.A.R. 12.211 and 12.212 they are licensed to the U.S. Government under, and the U.S. Government's rights therein are restricted pursuant to, the vendor's commercial license. 10. Severability. If any provision of this License Agreement shall be held to be invalid, illegal or unenforceable, the validity, legality and enforceability of the remaining provisions hereof shall not in any way be affected or impaired. 11.

No Waiver. No waiver of any breach of any provision of this License Agreement shall constitute a waiver of any prior, concurrent or subsequent breach of the same or any other provisions hereof, and no waiver shall be effective unless made in writing and signed by an authorized representative of the waiving party. 12. Supplier Software. The Software may include certain software provided by T AIS suppliers.

In such event, you agree that such supplier may be designated by T AIS as a third party beneficiary of T AIS with rights to enforce the Agreement with respect to supplier's software. Digital Solutions Division 9740 Irvine Boulevard Irvine, California 926181697 United States of America DSD 020905 5932 License Agreement Digital Solutions Division Limited Warranty Toshiba America Information Systems, Inc., "T AIS" warrants that this telephone equipment except for fuses, lamps, and other consumables will, upon delivery by T AIS or an authorized T AIS dealer to a retail customer in new condition, be free from defects in material and workmanship for twentyfour 24 months after delivery. This warranty is void a if the equipment is used under other than normal use and maintenance conditions, b if the equipment is modified or altered, unless the modification or alteration is expressly authorized by T AIS, c if the equipment is subject to abuse, neglect, lightning, electrical fault, or accident, d if the equipment is repaired by someone other than T AIS or an authorized T AIS dealer, e if the equipment's serial number is defaced or missing, or f if the equipment is installed or used in combination or in assembly with products not supplied by T AIS and which are not compatible or are of inferior quality, design, or performance. The sole obligation of T AIS or Toshiba Corporation under this warranty, or under any other legal obligation with respect to the equipment, is the repair or replacement by T AIS or its authorized dealer of such defective or missing parts as are causing the malfunction with new or refurbished parts at their option.

If T AIS or one of its authorized dealers does not replace or repair such parts, the retail customer's sole remedy will be a refund of the price charged by T AIS to its dealers for such parts as are proven to be defective, and which are returned to T AIS through one of its authorized dealers within the warranty period and no later than thirty 30 days after such malfunction, whichever first occurs. Under no circumstances will the retail customer or any user or dealer or other person be entitled to any direct, special, indirect, consequential, or exemplary damages, for breach of contract, tort, or otherwise. Under no circumstances will any such person be entitled to any sum greater than the purchase price paid for the item of equipment that is malfunctioning. To obtain service under this warranty, the retail customer must bring the malfunction of the machine to the attention of one of T AIS' authorized dealers within the twentyfour 24 month period and no later than thirty 30 days after such malfunction, whichever first occurs. Failure to bring the malfunction to the attention of an authorized T AIS dealer within the prescribed time results in the customer being not entitled to warranty service. No such modification or extension is effective unless it is in writing and signed by the vice president and general manager, Digital Solutions Division. SmartMedia a registered trademarks of Toshiba Corporation. Stratagy is a registered trademark of Toshiba America Information Systems, Inc. Windows and Microsoft a registered trademarks of Microsoft. Trade marks, registered trade marks, and service marks are the property of their respective owners. Inspection 1. When the system is received, examine all packages carefully and note any visible damage. If any damage is found, do not open the packages. Contact the delivery carrier immediately and make the proper claims. 2.

After unpacking and before installing, check the system against the packing list and inspect all equipment for damage. If equipment is missing or damaged, contact your supplier immediately. 3. Be sure to retain original packaging materials for reuse when storing or transporting system hardware. When handling installing, removing, examining PCBs, do not touch the back soldered side or edge connector. Always hold the PCB by its edges. When packaging and storing

the system, remove PCBs from the system cabinet. PCBs should be packaged in their original antistatic bags for protection against electrostatic discharge. Be sure to package equipment in its original shipping containers. For the Strata CTX28, a reserve power source HPFB6 may be connected to the system to serve as a power failure backup. See Step 9 on page 121. Clearances and Location The minimum clearance requirements for the Strata CTX28 Base cabinet are shown in Figure 11. Refer to Figure 15 on page 17 for CTX28 KSU mounting instructions. Figure 11 CTX28 Base KSU Clearance Requirements The ground for the CTX28 must originate at the building's main power distribution panel and have a solid connection to earth ground. Use an insulated, stranded copper wire to connect the TB3 terminal on the GMAU to earth ground. This wire should be 10 AWG or larger. The total resistance from TB3 to the ground point must not exceed one ohm. Connect the ground wire to the common ground point or ground rod, usually located at the utility entrance of the building. See Figure 12. Check local codes. In extreme cases, system failure may result because the system is not properly protected from lightning or power transients.

Table 12 Ground Wiring Summary Grounding Requirement From To Description System connects to earth ground Earth ground TB3 on GMAU Less than 1 ohm FG of HPFB6 connect to GMAU HPFB6 FG Screw TB1 on GMAU HPFB6 Ground Feed TB1 on GMAU TB3 on GMAU GETS connects green ground wire to GMAU GETS ground wire TB2 on GMAU See Figure 15. 5. Drill holes on these marks and secure screws approximately two thirds of the way into the top two holes on the mounting surface. 6. Hang the unit from the top two screws and then secure the top screws completely into the mounting surface. 7. Finish securing the unit to the mounting surface by completely screwing the bottom two screws into the wall. The GCTU, GVMU, and AC power adaptor plugs into the GMAU submotherboard dedicated slots. GMAU1A Submotherboard GCTU1A Processor Shipped with cabinet. GVMU Voice Mail Circuit Card Optional Voice Mail. GCDU1A CO, CLID, DKT circuit card Optional Supports 3 CO lines, 3 CLIDs, 8 Digital Telephones. The GCDU1A plugs onto the motherboard. GSTU1A Standard Telephone Circuit Card Optional Provides 1 Standard Telephone port. HPFB6 External Battery Optional Provides backup Reserve power. The telephone LCD language can be set from the telephone set or from WinAdmin. Both methods are shown below. Refer Table 17 on Page 14. Table 16 Greetings Language Settings on the GVMU Jumpers GVMU1A Prompt Language GVMU2A Prompt Language SW2 SW3 OFF OFF English English ON OFF French Spanish OFF ON English then French 1 1. The default greetings play in English then repeat in French. English then Spanish 2 2. The default greetings play in English then repeat in Spanish. ON ON French then English 3 3. The default greetings play in French then repeat in English. Spanish then English 4 4. The default greetings play in Spanish then repeat in English.